



AlcoSense[®] VERITY

Fuel Cell Breathalyser



Australian
Standard

AS 3543
2012
L1: 04/2012
Mar 18 2012

Please
Affix
Stamp
here

Product Registration

Register online at www.alcosense.com.au/warranty
or complete this form and forward to

Andatech Corporation Pty Ltd
PO BOX 3038
Nunawading VIC 3131
Australia

User's Manual

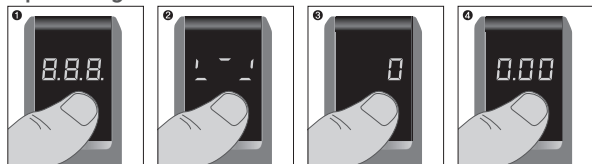
Version 3.3 October 2013

Congratulations on buying your new AlcoSense® Verity breathalyser.

Now, when you are drinking, you can be more aware of your alcohol level before you get into the car and possibly drive dangerously.

We hope you enjoy owning your AlcoSense® Verity breathalyser. If you have any questions regarding the unit or want to speak with us further, please visit alcosense.com.au or call 1300 800 200 (between 9am and 5pm Monday to Friday).

Operating Instructions

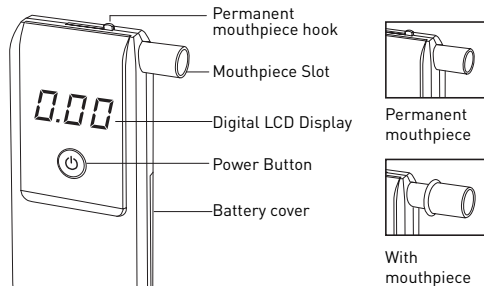


- Step 1:** Press the power button
- Step 2:** The breathalyser will start to warm up until it shows the "0" sign.
- Step 3:** Blow into the mouthpiece on the unit for 4 seconds or until you hear the unit 'click'.
- Step 4:** The result will be displayed for 10 seconds.
If 'OL' appears on screen during the test, it means that the reading is in excess of 0.40%BAC.

Please note:

The breathalyser will turn off automatically when not in use.
To view the number of tests "C" and the number of positive tests detected "A" since the last calibration, press and hold down the power button.

Components

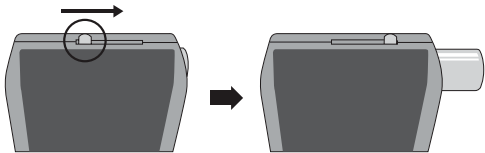


Contents: Breathalyser, hardcase, mouthpieces (x5), AAA batteries (x2), carry pouch and user's manual

Specifications

Indication of %BAC	0.00 to 0.40% BAC
Accuracy	+/- 0.01 at 0.10% BAC
Warm-up Time	3 seconds - 4 minutes
Response Time	Within 10 seconds at 0.10% BAC
Use mouthpiece	Only compatible with AlcoSense® mouthpieces
Sensor Type	Fuel Cell Sensor
Power Supply	2x AAA alkaline batteries
Weight	66g including batteries
Dimensions (mm)	100 high x 44 wide x 15 deep
Calibration	Recommended every 6 months or 500 tests
Ambient Conditions	Operations: 5 - 40°C Storage: 0 - 50°C

Personal mouthpiece



The Verity features a built-in permanent mouthpiece for personal use. Push the hook to the side to extend the mouthpiece for personal testing. To use a separate mouthpiece with the breathalyser, simply insert the mouthpiece into the mouthpiece slot.

Warning display

- | | |
|-----|---|
| Flo | The breath sample was not strong enough for measurement. Please power on the unit again and make sure the breath is strong and steady during sampling. |
| bAt | The battery power is low. Please replace the batteries. |
| CAL | If you have tested over 1000 times, CAL will show up on the display screen for 3 seconds before warming up for a test. Please send the breathalyser back for calibration. |

Warnings

- Allow at least 20 minutes after eating or drinking before testing. Any type of alcohol remaining in the mouth of saliva may interfere with proper testing and requires about 20 minutes to disperse. This includes alcohol-based mouthwash or similar products.
- Avoid testing in high wind conditions or in poorly ventilated or enclosed spaces. Poor ventilation may also lengthen the time required for warm up between tests.
- Do not blow smoke, saliva or other contaminants into the mouthpiece, as the sensor may become damaged. Wait at least 20 minutes after smoking before conducting a test.

- Do not use the breathalyser as a tool to drink and drive.
- Do not blow fluid into the instrument as it will damage the sensor and void your warranty.
- Do not store in an extreme environment where high temperature or high humidity exists. Keep out of the reach of children.
- To maintain accuracy, we recommend professional recalibration every 6 months.
- Blood alcohol concentration can continue to rise for up to 2 hours after the cessation of drinking. If a caution result or a result is close to the designated BAC, it is recommended to wait and retest after 20 minutes.
- It can take 10 hours or more for the alcohol level to return to a zero after a high blood alcohol level has been reached. A further test should be carried out later in the day of the following morning.
- User-serviceable batteries safety:
Do not dispose of batteries in a fire.
Do not recharge a battery unless it is specifically marked "rechargeable".
Do not expose Verity or batteries to heat source.
Do not mix old and new batteries, or mix different types or makes of batteries.
Do not allow children to play with the batteries.

Warranty

The manufacturer warrants for 3 years from the date of purchase, the product to be free from defects in workmanship or material (excluding recalibration) under normal use. The manufacturer's obligation under this warranty is limited to replacing, adjusting or repairing the unit if returned along with proof of purchase. This warranty is void if the unit has been tampered with, damaged or abused in any way.

Recalibration & Service

The AlcoSense® Verity uses a fuel cell sensor to measure breath alcohol levels. Depending upon the amount of alcohol registered by the sensor after a period of time, it will require recalibration. Andatech recommends the AlcoSense® Verity is calibrated every 6 months or after 500 uses.

WARRANTY DETAILS

It is our aim to provide you with quality products that you can trust. Our products come with guarantees that cannot be excluded under the Australian Consumer Law. You are entitled to a replacement or a refund for a major failure and for compensation for any other reasonably foreseeable loss or damage.

You are also entitled to have the goods repaired or replaced if the goods fail to be of acceptable quality and the failure does not amount to a major failure.

The Guarantee

The product is guaranteed to be free from defects in workmanship and parts for a period of 3 years from date of purchase. Defects that occur within this warranty period, under normal use and care, will be repaired, replaced or refunded at our discretion, solely at our option with no charge for parts and labour. The benefits conferred by this warranty are in addition to all rights and remedies in respect of the product that the consumer has under the Trade Practices Act and similar state laws.

Proof of Purchase

This warranty is valid for the original purchase and is not transferable. Please keep your purchase docket or receipt as proof of purchase and as proof of date on which the purchase was made. The purchase docket (or a copy) or receipt must be presented with the warranty when making a claim under this warranty.

Service during the Warranty Period

To claim for warranty, contact us on 1300 800 200 or info@andatech.com.au to get an RA# (Return Authorization Number). Ensure that the RA# is clearly stated on the outside of the packaging and that the product is properly packaged so that no damage occurs to the product during transit. Shipping of the product back to us for warranty will be at your cost. A product return without the RA# or proof of purchase will not be accepted.

Extent of Warranty

This warranty is limited to defects in workmanship or parts. All defective products or parts will be repaired or replaced. This warranty does not cover manuals and packaging.

Normal Wear and Tear

This warranty does not cover normal wear and tear to the product or parts.

Exclusions

This warranty does not cover:

- Calibration costs.
- Any defect caused by an accident, misuse, abuse, improper operation, lack of reasonable care, unauthorised modification, loss of parts, tampering or attempted repair by a person not authorised by the distributor.
- Any product that has been damaged by a lightning strike either directly or indirectly or a main power surge or liquid ingress.
- The product if it is located outside of Australia.
- Any damage caused by improper power input or improper cable connection.



Limits

AUSTRALIAN BLOOD ALCOHOL LIMITS: Adult License 0.05%

Some drivers are restricted to lower levels of BAC. Please refer to your local transport authority for your correct limit. If in any doubt do not drink and drive.

The safest level when driving is none at all. Alcohol impairs your judgement and can make you drowsy or sleepy.

Disclaimer

PLEASE NOTE:

1. This product must be used in accordance with the instructions in this manual and - in particular - must not be allowed to get wet.
2. This product is intended to provide the user with an indication of alcohol on the breath. However, neither the manufacturer nor the supplier gives any warranty (express or implied) that the product can give any indication of blood alcohol level.
3. A person's BAC (Blood Alcohol Concentration) can only be accurately measured by the administration of a blood test. This product only measures breath alcohol content which, in turn, only gives an approximately indication of blood alcohol concentration.
4. In these circumstances the user of this product should not rely on the information provided thereby as an accurate indication of his blood alcohol concentration or of his level of intoxication or of his fitness to drive and in particular should not take any action in reliance on such information as the product can provide no more than an indication of alcohol on the breath.
5. If the user of this product makes any decision or takes any action based on the use of the product such decision or such action shall be at the sole risk of the user and neither the manufacturer nor the supplier assumes any responsibility for such decision or action. In particular, neither the manufacturer nor the supplier shall be in any way liable if the user of the product asserts that the product led him to believe that he was fit to operate a motor vehicle and is subsequently found not to be so fit.

Product Registration Form

Alcosense.com.au/calibrate is a central location where you can register your warranty, sign up to receive calibration reminders and schedule calibrations. Once you have registered you can add as many AlcoSense products as needed to that account.

If you prefer the old fashioned method of product registration, complete this form and forward to:

Andatech Corporation Pty Ltd
PO BOX 3038, Nunawading VIC 3131 Australia.

Product

Date of Purchase

Place of Purchase

Surname

Given Name

Address

Suburb

Postcode..... State

Contact no.

Email

AlcoSense®

